

Module 4 LO2

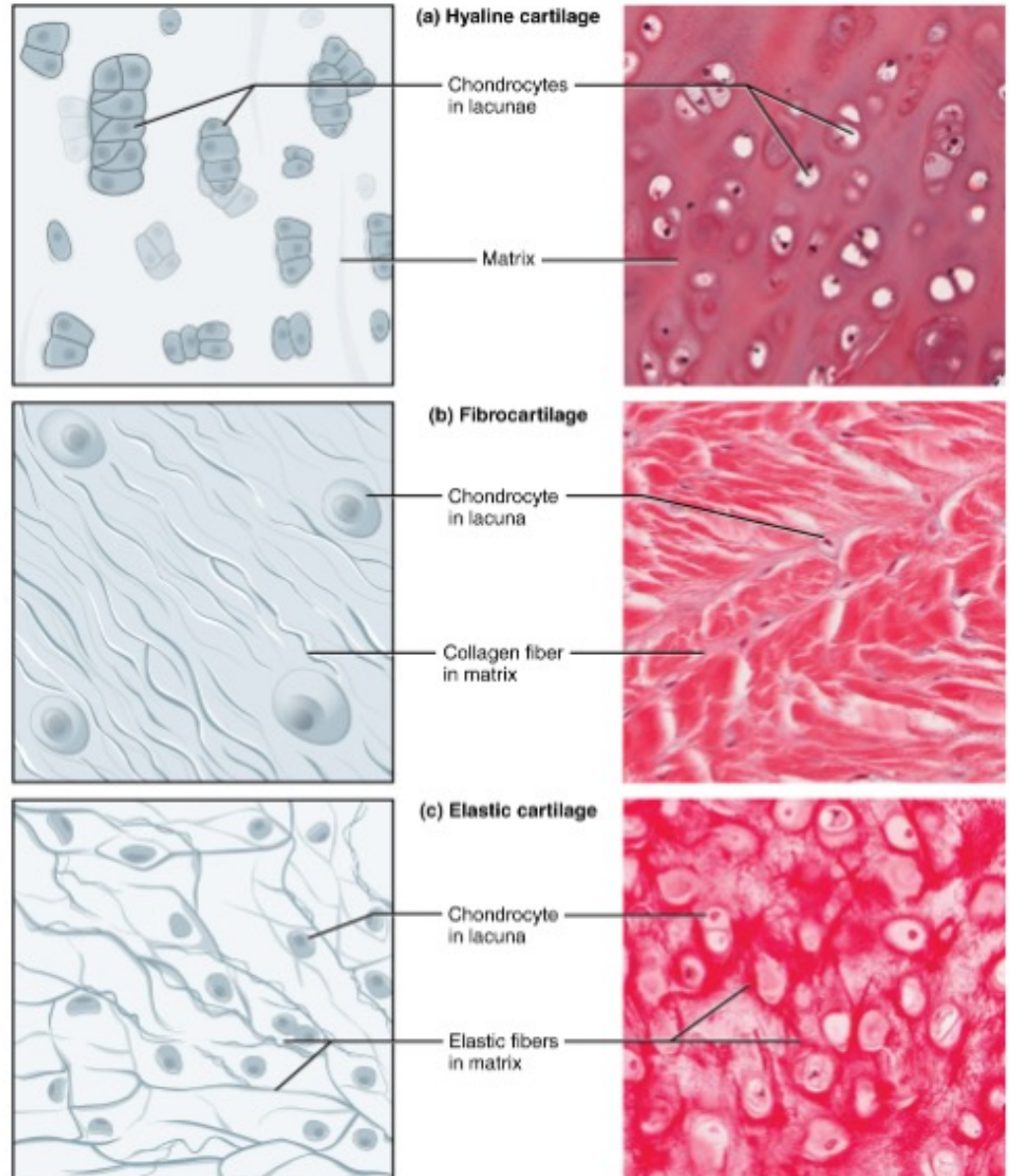
Cartilage

Dr. Lisa Brinn

lbrinn@fiu.edu

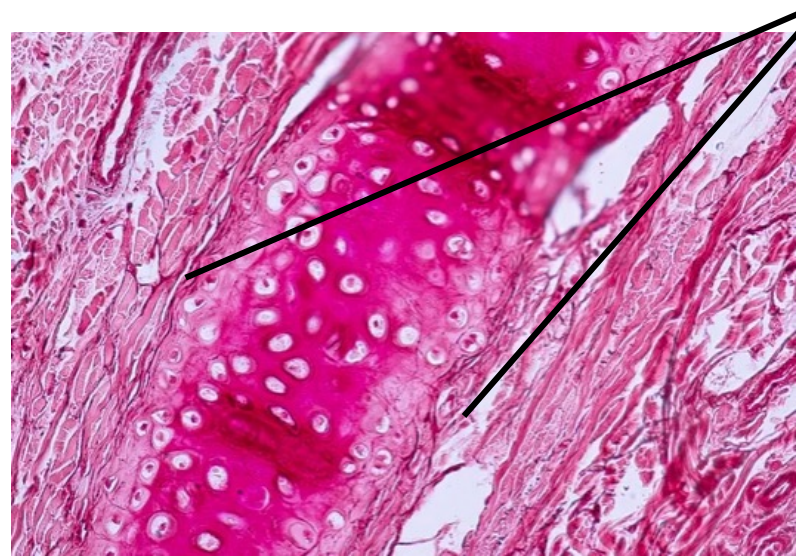
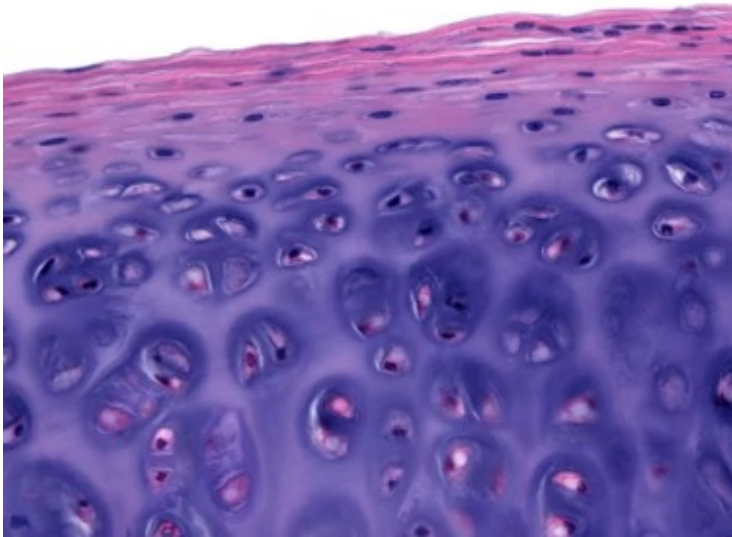
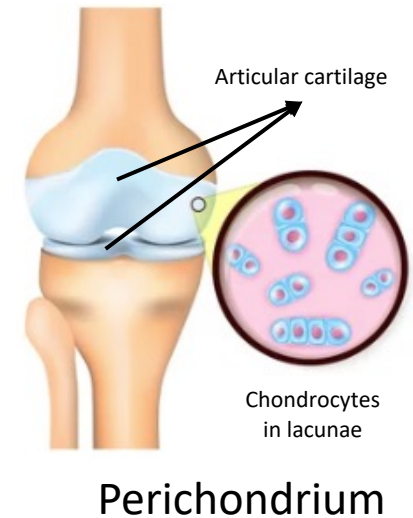
2. Cartilage

- Types
 - A. Hyaline cartilage
 - B. Fibrocartilage
 - C. Elastic cartilage



A. Hyaline Cartilage

- Cells
 - Chondroblasts – produce matrix (collagen and proteoglycans)
 - Chondrocytes – in lacunae



Cartilage Growth

1. Appositional growth

- Chondroblasts – in perichondrium add new cartilage

2. Interstitial growth

- Addition of matrix by chondrocytes in center of tissue

